

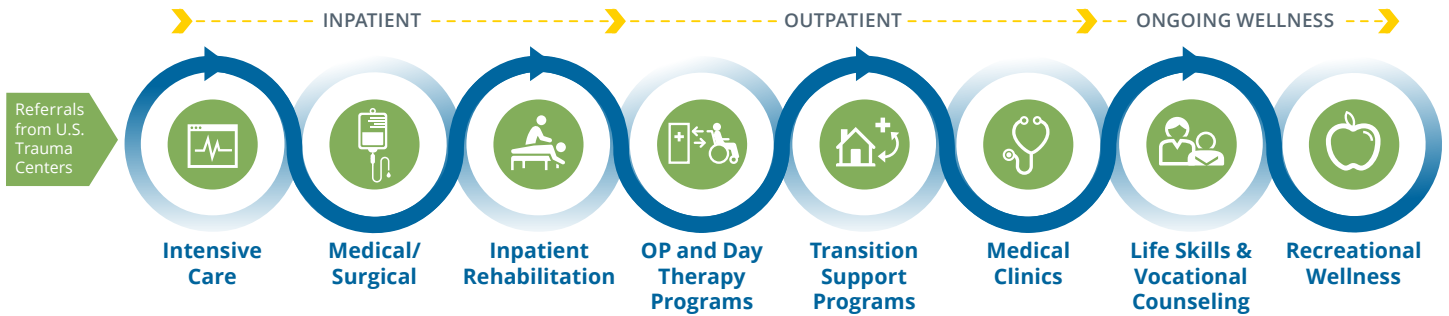


# Why Shepherd?

## COMPREHENSIVE CONTINUUM OF CARE

For people experiencing brain or spinal cord injury, chronic pain, multiple sclerosis, or other neurological conditions, Shepherd Center provides the most comprehensive continuum of clinical care, research, and family support delivered with unwavering heart, humor, and hope. Ranked by *U.S. News* as the top rehabilitation hospital in the southeast and among the top 10 in the nation, Shepherd Center is a stand-alone facility where people who need comprehensive neurorehabilitation find unmatched expertise and compassion to achieve their goals.

### One-Stop Care: Multiple Levels and Unique Services (available, as needed)



## BOARD-CERTIFIED PHYSICIANS

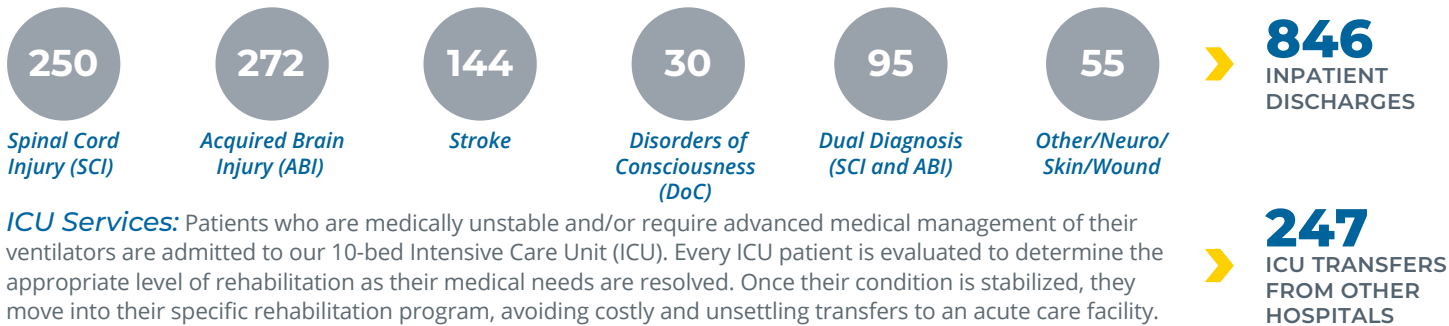
Our employed team of 22 highly specialized physicians are dedicated to helping patients rebuild their lives. Their daily work with patients and multidisciplinary care teams results in outcomes that exceed national averages for the people we serve.

### Percentage of Physicians by Board Certifications

Physical Medicine and Rehabilitation (PM&R)	.....71%
Neurology	.....19%
Pulmonology/Critical Care	.....10%

## INPATIENTS SERVED

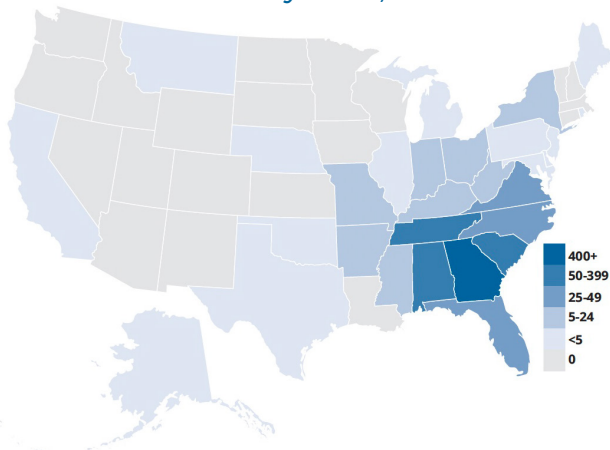
Since its opening in 1975, Shepherd Center has grown to a world-renowned, 152-bed hospital. Patients travel from across the nation and world to Shepherd Center for its innovative brand of neurorehabilitation. The average age of inpatients treated in FY 2022 was 41 years old, ranging from adolescents to older adults.



## SERVING PATIENTS ACROSS THE NATION

Shepherd Center in Atlanta has treated more than 15,000 inpatients from all 50 U.S. states and more than 50 foreign countries and territories since 1996.

Admissions By State, 2021 - 2022



## OUTPATIENT PROGRAMS & SERVICES

More than 8,200 individual patients benefited from Shepherd Center's outpatient programs and services, including telehealth, in FY 2022.

### Transition Support Services

Post-discharge, high-risk patients stay healthy at home and lower their risk of rehospitalization through the support of our professional team of nurses, case managers, life skills coaches and vocational counselors.

### Outpatient Rehabilitation and Day Program Specialty Services

Intensive outpatient therapy programs enable patients to continue their recovery and achieve functional gains to perform the skills necessary for community reintegration.

### Outpatient Specialty Clinics

Comprehensive care programs at Shepherd Center treat the array of secondary conditions that may affect people with spinal cord injury, brain injury, pain, multiple sclerosis, and other neurological conditions.



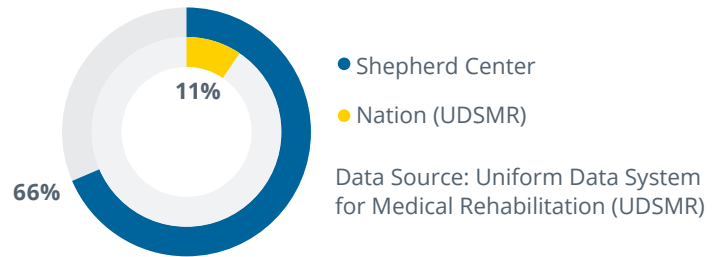
# Demonstrating Excellent Outcomes

## TREATING PATIENTS WITH TRAUMATIC INJURIES

Volume matters. Extensive experience in caring for people with catastrophic injuries leads to superior patient outcomes.

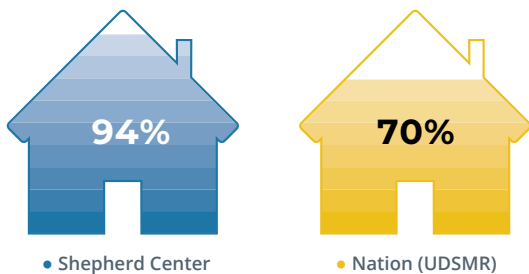
At Shepherd Center, 66% of rehabilitation patients treated have traumatic injuries, compared to less than 11% of rehabilitation patients treated across the nation.

### Proportion of Patient Volume with Traumatic Injuries



## RETURN TO COMMUNITY

More patients return to their home setting after undergoing rehabilitation at Shepherd Center.

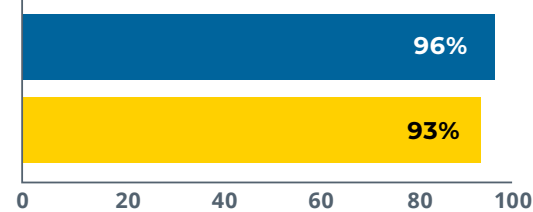


Data Source: Uniform Data System for Medical Rehabilitation (UDSMR)

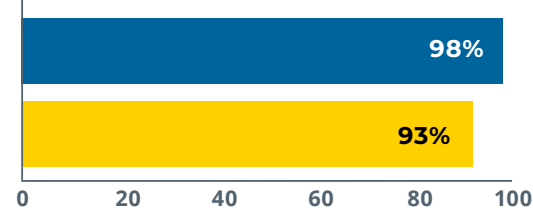
## PATIENT SATISFACTION

Shepherd Center excels in providing an outstanding patient experience. Surveys of inpatients and their families after they leave the hospital attest to their high satisfaction.

### Overall Rating of Care



### Likelihood of Recommending Facility



● Shepherd Center ● Nation

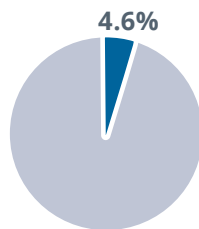
Note: Nation reflects Press Ganey's "All Hospital Custom" benchmark for similar facilities using the rehabilitation survey in FY 2022.

Data Source: Press Ganey Inpatient Rehabilitation Hospital Survey

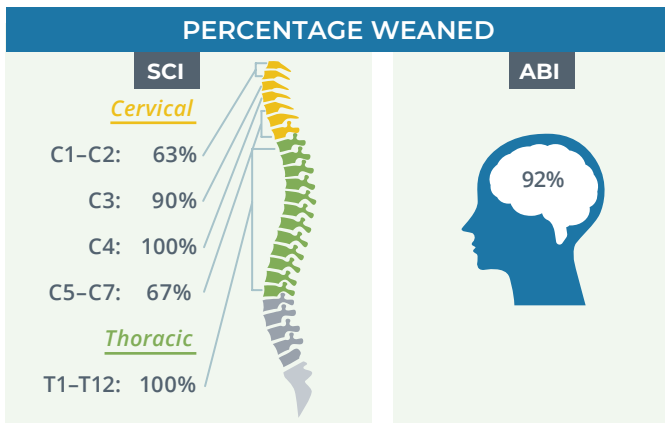
## REHOSPITALIZATION

In addition to returning home, patients discharged from Shepherd Center are more prepared to safely remain at home. Only 4.6% of patients who discharged to the community in FY 2022 required rehospitalization within 30 days.

### 30-Day Rate of Rehospitalization



Data Source: Patient-Reported Outcomes via Phone Survey



## VENTILATOR MANAGEMENT

Shepherd Center's ventilator services program is led by an experienced and aggressive team of respiratory therapists, pulmonologists, and an intensivist who work to wean patients off ventilators whenever possible to increase independence, activity, and comfort. For patients who must use a ventilator, Shepherd Center staff focuses on educating the patient on how to live an active lifestyle while also training each patient and their family members in home care techniques and health management.



### LEARN MORE

Click the QR code or scan it with your phone's camera to visit [shepherd.org](http://shepherd.org).

