

**1975**

David Apple, M.D., became Shepherd Center's first medical director and now serves as medical director emeritus.

**1985**

The Clinical Research Program began at Shepherd Center. The program would eventually be renamed the Virginia C. Crawford Research Institute in 1995. With the initiation of a research program, Shepherd Center established its role at the forefront of clinical research and innovation primarily focused on spinal cord injury, brain injury, multiple sclerosis and neuromuscular disorders.



**1975**

Shepherd Spinal Center opened its doors as a six-bed facility, staffed by two doctors, three therapists and nursing support from the leasing hospital. Almost immediately, there was a waiting list.

**1982**

The hospital moved to its current location on Peachtree Road in Atlanta's Buckhead area. The new 93,000-square-foot facility housed 40 beds and allowed room for growth in specialized programs, such as peer support and advocacy.



1991

The Multiple Sclerosis Institute opened to provide treatment to people with multiple sclerosis (MS), suspected MS or related disorders. It was later renamed the Andrew C. Carlos Multiple Sclerosis Institute at Shepherd Center.



1995

Shepherd Center established its acquired brain injury (ABI) as its third area of specialty, adding a 20-bed unit for patients with ABI.



Shepherd Spine and Pain Institute opened to serve people with pain resulting from neurologic degenerative disease or injuries. It was renamed the Dean Stroud Spine and Pain Institute in 2007.

2000



1992

Shepherd Center doubled in size with the opening of the Billi Marcus Building, a 153,000-square-foot expansion named for the resolute fundraiser and wife of The Home Depot's former chairman, Bernie Marcus. This development allowed Shepherd to expand outpatient services and provide space for its newly created Multiple Sclerosis Institute, as well as a full-size gym, swimming pool and auditorium.



1996

Shepherd Center representatives, including Shepherd Center co-founders Alana and the late Harold Shepherd, along with David Apple, M.D., led the Atlanta Paralympic Games Organizing Committee, which presented the successful bid for Atlanta to host the 1996 Paralympic Games.



1997

The hospital launched Shepherd Pathways, a post-acute brain injury rehabilitation center in nearby Decatur, Georgia, that provides community-based outpatient services, a day program and residential program.

2005

Shepherd Center Foundation was established with Duncan Beard serving as the first Chairman of the Board of Trustees to set development policy and act as the major fundraising entity for Shepherd Center.

2005

David F. Apple, Jr., M.D., retires from his position as medical director of Shepherd Center. He served as medical director of Shepherd Center since the hospital's inception in 1975, and now holds the position of medical director emeritus.



2007

The Jane Woodruff Pavilion was added to the Marcus Building, nearly doubling the size of the hospital with an additional 170,000 square feet. Among other things, the expansion increased the number of patient beds from 100 to 120, and provided additional therapy gyms and treatment rooms, the Dora and Ed Voyles Assistive Technology Center, a new cafeteria and dining facility, and additional office space.

2004

Donald Peck Leslie, M.D., is named medical director of Shepherd Center. Before this, Dr. Leslie served for 10 years as associate medical director of Shepherd Center and medical director for Brain Injury Services.



2005

Shepherd Center launched Beyond Therapy®, a rigorous, activity-based program designed to help people with a variety of neurological disorders improve lifelong health, minimize secondary complications and get the most from any new neural links to their muscles.



2008

Shepherd Center completed the Irene and George Woodruff Family Residence Center, a \$16 million residential center adjacent to the hospital that provides temporary housing for families of patients. The 87,000-square-foot facility includes 84 wheelchair accessible suites, each containing a bedroom, living space, kitchenette and bathroom.

Shepherd Center launched the SHARE Military Initiative thanks to a generous donation from Atlanta philanthropist Bernie Marcus. As an extension of the ABI Program, SHARE provides treatment for military personnel who have sustained mild to moderate brain injuries, along with diagnoses of post-traumatic stress and other mental health conditions.



2008

2014



Shepherd's Men, comprised of active and retired servicemen, as well as civilian volunteers, enthusiastically began raising awareness and funds for the SHARE Military Initiative at Shepherd Center through annual events. Since 2014, Shepherd's Men has raised more than \$5 million to support the SHARE Military Initiative.

2016

Shepherd Center launched the Complex Concussion Clinic to address complications of mild brain injuries in patients.



2010

Shepherd Center completed a \$9.8 million renovation and remodeling project that created more private rooms for patients, added a second brain injury unit, and reconfigured and remodeled various units. Shepherd Center increased its number of beds to 152, including a 10-bed ICU.



2013

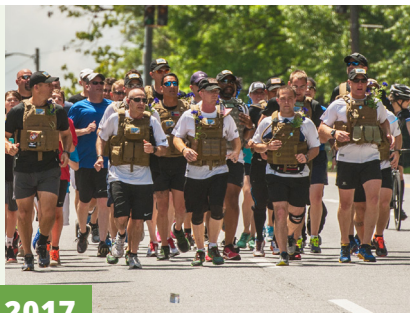
Shepherd Center began testing Indego®, a new powered exoskeleton device designed to assist walking in people with spinal cord injury and other mobility-limiting conditions. It was developed by Vanderbilt University engineers in consultation with Shepherd Center researchers and then licensed and manufactured by Parker Hannifin Corporation.



2014

Shepherd Center embarked on a \$12.5 million renovation and building project to add 13,000 square feet for an expanded and updated lab, pharmacy and MRI suite.

Thanks to a gift from The Marcus Foundation, Shepherd Center opened a new facility at 80 Peachtree Park Drive to house the SHARE Military Initiative. The facility also houses the Complex Concussion Clinic and Eula C. and Andrew C. Carlos Multiple Sclerosis Rehabilitation and Wellness Program.



2017



2017

Shepherd Center launched AutoCoach®. Partnering with the Georgia Governor's Office of Highway Safety (GOHS) and IT management consulting firm CapTech, Shepherd Center's certified driver rehabilitation specialists and injury prevention experts used their specialized training to create the innovative app that makes it easier for adults to effectively teach their teens to drive defensively and safely.



2017

Michael Yochelson, M.D., MBA, was named chief medical officer of Shepherd Center, as Donald Peck Leslie, M.D., retired as medical director after 13 years (and 34 years total on medical staff) and became medical director emeritus and special adviser to the Shepherd Center Foundation.

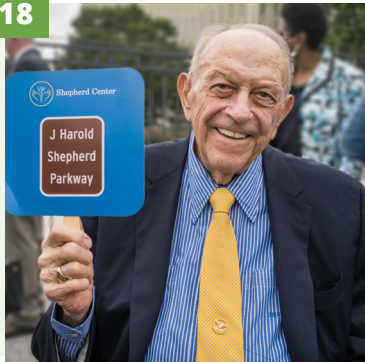
Sarah Morrison, PT, MBA, MHA, became president and CEO of Shepherd Center, having served in various leadership roles at the hospital since 1984. Before assuming the top role, Morrison served as vice president of clinical services and also as director of the Shepherd Center Spinal Cord Injury Program. Before that, she worked at Shepherd Center as a director of the medical/surgical and ICU programs, manager of the Spinal Cord Injury Day Program, a physical therapy supervisor and a physical therapist.

2017



2018

The naming of the J. Harold Shepherd Parkway section of Peachtree Road honored Shepherd Center co-founder, the late Harold Shepherd. This was a testament to the incredible contributions Harold Shepherd made to Atlanta and beyond, as well as to the community support for the Shepherd family and the recognition of Shepherd Center's ability to provide its patients with hope, dignity and independence.



2018

Shepherd Center Foundation's annual Legendary Party had the opportunity to honor co-founders Alana and Harold Shepherd, raising a record \$6.2 million in 2018 and an astounding \$19.1 million over the decade for patient and family programs.



2018

Shepherd Center's Director of Multiple Sclerosis Research Debbie Backus, PT, Ph.D., began research funded by the hospital's largest research grant to date – a PCORI grant of \$5.7 million over four years to study the delivery and effects of exercise for people with MS. This grant signifies the commitment of our Crawford Research Institute in securing grants that directly improve the care we provide our patients. Shepherd researchers have garnered current multi-year grants that total more than \$17 million.



2018

Shepherd Center acquired 2.6 acres of nearby land to expand our family housing program, allowing for our out-of-town families to stay with their loved ones for as long as they are at Shepherd Center.



2018

Shepherd Center mourned the loss of co-founder Harold Shepherd. He passed away on December 10, 2018, leaving a legacy of generosity and kindness.

2019

Shepherd Center was named one of Atlanta's "Best Places to Work" in the Atlanta Business Chronicle's 16th annual ranking of 103 metro area companies. Shepherd Center was recognized as the Atlanta Business Chronicle's #4 Best Place to Work in the extra-large company (500-plus employees) category. The newspaper also ranked Shepherd Center among the Best Places to Work in its 2017 and 2018 listings.



2019

Shepherd received three new facility dogs from our friends at Canine Companions for Independence, bringing our current total to six. Made possible through donor support and handled by highly trained Shepherd Center employees, our facility dogs know up to 40 commands – such as getting items out of a refrigerator, opening a door and pushing an elevator button – all activities that help facilitate the independence that Shepherd Center patients and clients work toward.

2019

Shepherd Center's employee giving campaign (ShepherdCares) raised more than \$214,000 with 85 percent of Shepherd Center staff contributing to the campaign. It has raised a total of \$1.6 million over the past decade. The commitment of employees helps continue our differentiating, value-added services.



2019

Shepherd Center co-founders Alana Shepherd and James Shepherd were recognized on August 22, 2019, with Lifetime Achievement Awards at the Atlanta Business Chronicle's Most Admired CEOs Awards dinner. They were among 44 leaders in 22 categories and industries, from accounting to utilities and energy, who were honored.



2019

Shepherd Center launched a new electronic medical record system called Epic to enhance patient safety, collaboration and efficiency to meet patients' unique needs across the continuum of care.

2019

Shepherd Center co-founder James Shepherd passed away on December 21, 2019, in Atlanta surrounded by loved ones. Family and friends remember James as a savvy businessman, good-humored prankster, kind friend and dedicated advocate for people with disabilities. In the 46 years since his paralyzing injury, he, along with his parents and Dr. Apple, helped build Shepherd Center as the bridge from "I can't," to "I can."



2020

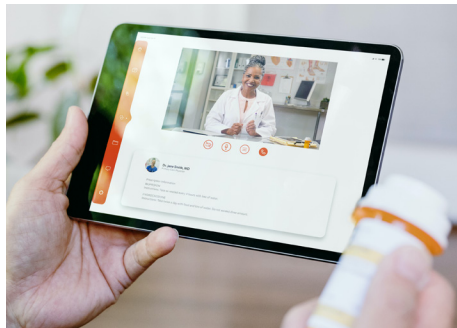
Shepherd Center was recognized as one of the top 10 rehabilitation hospitals in the nation for the 12th consecutive year by *U.S. News & World Report* in the magazine's 2020-21 Best Hospitals rankings.

2020

Shepherd Center celebrated its 45th anniversary. In its first 45 years, Shepherd Center grew from a six-bed rehabilitation unit to a world-renowned, 152-bed hospital.

2020

Alana Shepherd, co-founder of Shepherd Center, was named the Chairman of the Board of Directors.



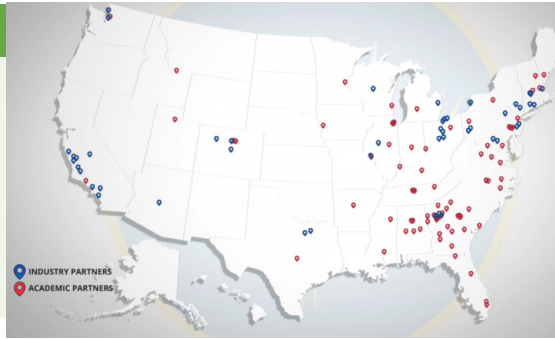
2020

Shepherd Center launched telehealth, telepsychology and telerehabilitation capabilities, making it possible for medical providers and patients alike to virtually see and hear each other, providing better interaction and enhancing care. While virtual care was already part of Shepherd Center's strategic plan, the launch was expedited due to need caused by the COVID-19 pandemic. The hospital now does between 75 and 100 televisits each day.



2021

Shepherd Center expanded its research prowess by receiving the Spinal Cord Injury Model Systems grant for the 8<sup>th</sup> time, enrolling the first participant in the UP-Lift trial for electrical stimulation for people with chronic tetraplegia; enrolling its first patient in a stem cell trial for MS; and, receiving a grant from the Wounded Warrior Project to study telehealth/hybrid programming for SHARE clients.



2021

Shepherd Center was recognized as a top employer for disability inclusion by Disability:IN.

2021

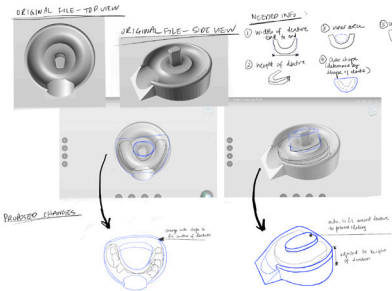
Shepherd Center partners with Georgia State University to pilot an innovative study using 3D printers to help patients and students.

2021

Shepherd Center was recognized by the Georgia Hospital Association with an award for use of telehealth.

2022

Shepherd Center continued to lead and advocate for disability inclusion in the workplace with employee Zac Bradley being the keynote speaker at a meeting sponsored by the New York Stock Exchange.



2022

Received generous grants from The Arthur M. Blank Family Foundation and the Marcus Foundation to expand access to care for patients and their families.

2022

The Project Rollway movie debuted and won a Golden Telly award.

2022

Shepherd Strikers power soccer team wins the 2022 MK Battery Presidents Cup.



2022

The art therapy program led the development of a new mural in Livingston Gym painted by patients, staff and families.



2022

Eight Shepherd Center physicians recognized on Atlanta Magazine's Top Doctors list.



2022

Shepherd Center recognized as No. 8 Best Hospital for Rehabilitation and No. 1 in the southeast by *U.S. News & World Report*.